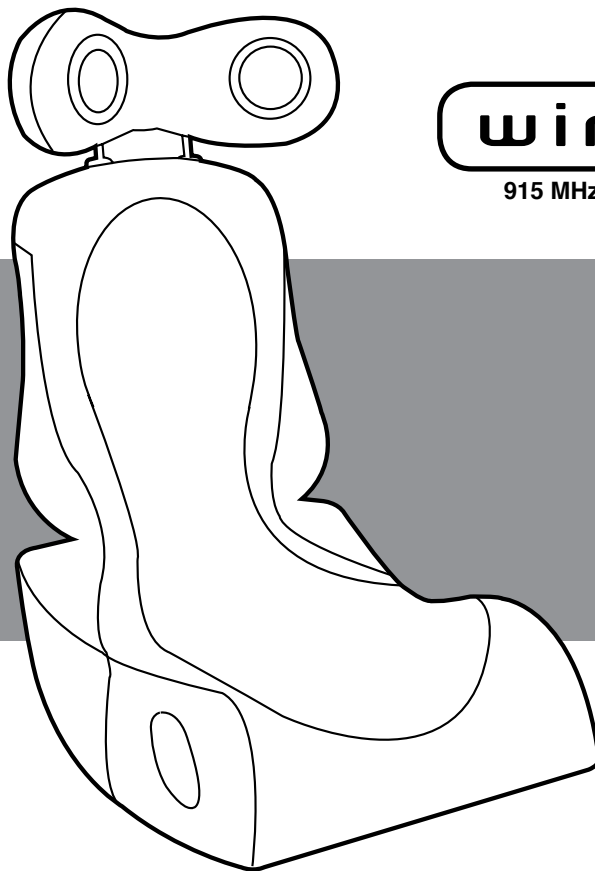


boomchair™

experience the ultimate level
of gaming and music

pulse



915 MHz Wireless Transmitter

DO NOT RETURN TO RETAILER.

For returns, exchanges, or troubleshooting questions please contact LumiSource directly at 1-888-461-5864 or write to customerservice@lumisource.com.

LumiSource, Inc.



Congratulations!

You are now the proud owner of a Wireless BOOMCHAIR™. Prepare to experience your entertainment on a whole new level. BOOMCHAIR™ allows you to HEAR the sound and FEEL the excitement. You'll experience every crash, bang, and boom while enjoying your favorite game, music, or movie. BOOMCHAIR™ is also a great game seat built to endure the rigors of today's gaming environment. Take a moment to review your owner's manual before connecting your BOOMCHAIR™. Assembly and operation of the BOOMCHAIR™ is simple.

If you need further assistance visit us at www.BoomChair.com or www.LumiSource.com

BOOMCHAIR™, a LumiSource® product.
LumiSource, Inc.
2950 Old Higgins Road, Elk Grove Village, IL 60007

PATENTS PENDING

READ BEFORE USE

- DO NOT wash or soak with water. If BOOMCHAIR™ gets wet, disconnect power immediately and do not use until completely dry.
- Turn power off and unplug BOOMCHAIR™ when not in use.
- Children under 5 years old should not use this product without parental supervision.
- For INDOOR use only/ DO NOT expose to direct sunlight, moisture, or extreme temperatures.
- DO NOT use on slippery or uneven flooring.
- DO NOT use on hardwood floors, it may cause scratching.
- Excessive exposure to audio equipment at high volume may lead to hearing loss.
- DO NOT OPEN

Caution: To reduce the risk of electric shock and fire, do not open the BOOMCHAIR™. There are no user serviceable parts inside. Refer to your warranty for service information.



FCC part 15.21:

Warning: Changes or modifications to this unit not expressly approved by the party responsible for compliance could void the user's authority to operate the equipment.

FCC part 15.105:

NOTE: This equipment has been tested and found to comply with the limits for a Class B digital device, pursuant to Part 15 of the FCC Rules. These limits are designed to provide reasonable protection against harmful interference in a residential installation. This equipment generates, uses, and can radiate radio frequency energy and, if not installed and used in accordance with the instructions, may cause harmful interference to radio communications. However, there is no guarantee that interference will not occur in a particular installation. If this equipment does cause harmful interference to radio or television reception, which can be determined by turning the equipment off and on, the user is encouraged to try to correct the interference by one or more of the following measures:

- Reorient or relocate the receiving antenna.
- Increase the separation between the equipment and receiver.
- Connect the equipment into an outlet on a circuit different from that to which the receiver is connected.
- Consult the dealer or an experienced radio TV technician for help.

FCC WARNING

This device complies with Part 15 of the FCC rules.

Operation is subject to the following two conditions:

- (1) This device may not cause harmful interference.
- (2) This device must accept any interference received, including interference that may cause undesired operation.

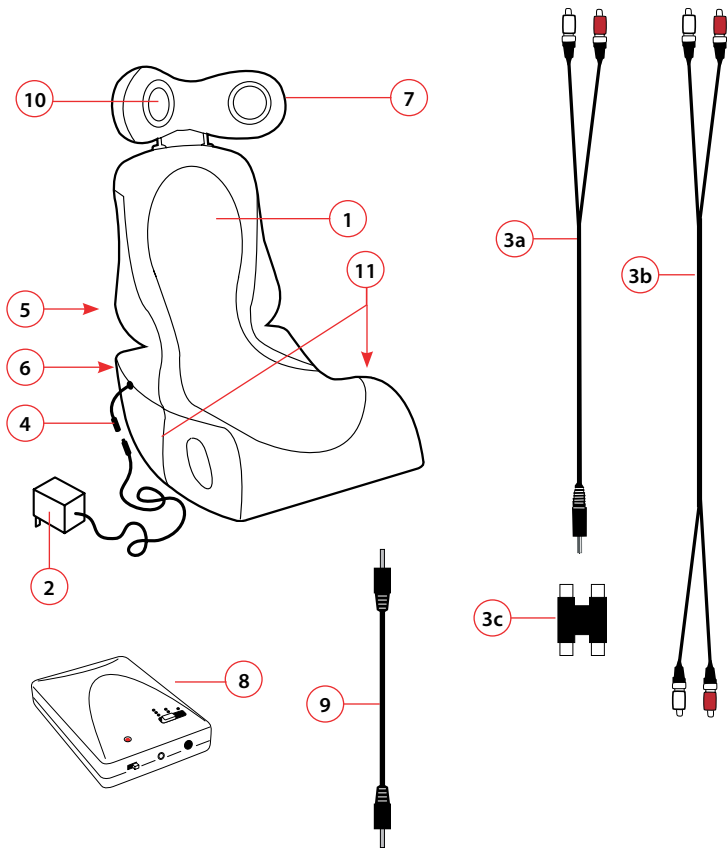
FCC ID: U7YBM-SVC

Exposure to radio frequency energy:

This device and its antenna must not be co-located or operated in conjunction with any other antenna or transmitter. To comply with FCC RF exposure requirements, only use supplied antenna.

SET-UP GUIDE

The BOOMCHAIR™ comes with the following:



PARTS LIST:

- 1) BOOMCHAIR™
- 2) 12V POWER SUPPLY (UL Listed)
- 3a) RCA TO MINI AUDIO CORD
(headphone jack to audio left & right channel connectors)
- 3b) RCA CORD (audio left & right channel connectors)
- 3c) RCA AUDIO COUPLER
- 4) POWER RECEPTACLE
- 5) LOCKING HINGE + HOOK & LOOP FASTENER
- 6) ADJUSTABLE RECLINE STOPPERS
- 7) ADJUSTABLE HEADREST
- 8) WIRELESS TRANSMITTER
(requires 4 AA batteries, not included)
- 9) AUDIO CORD FOR WIRELESS TRANSMITTER
- 10) SPEAKERS
- 11) MESH POCKETS

SYSTEM SPECS:

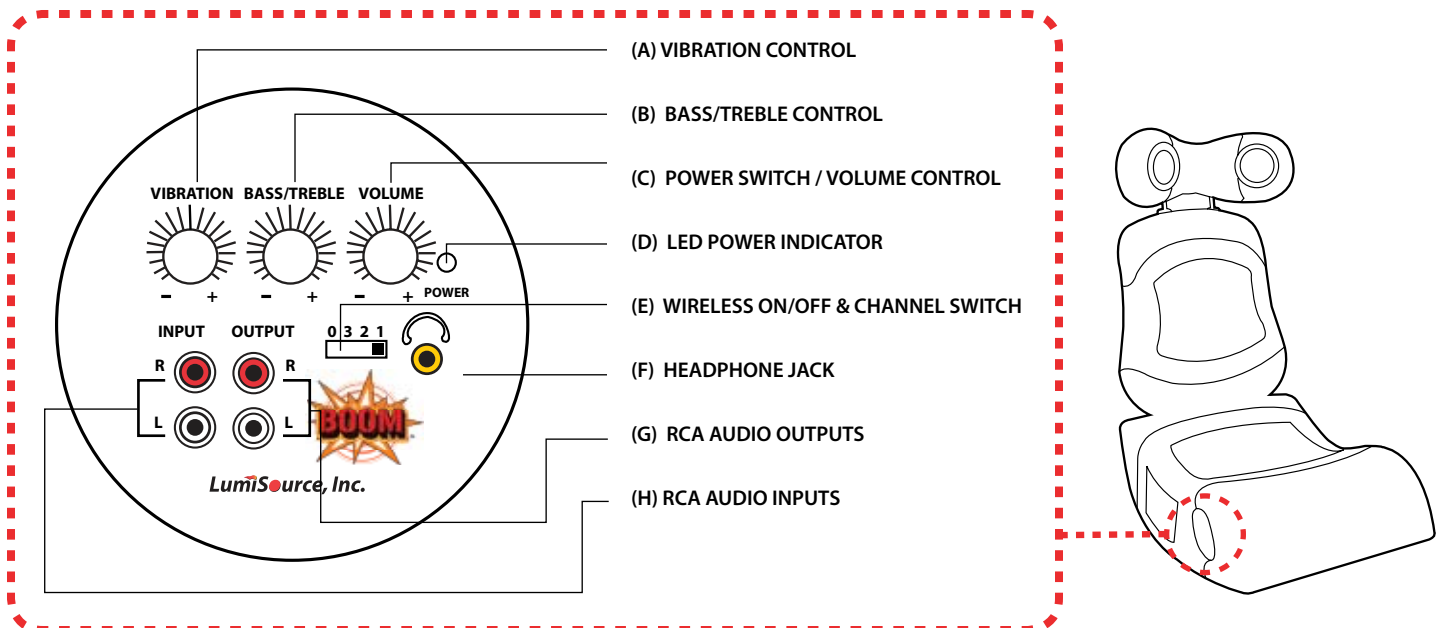
Dimensions: 27 in. L x 18 in. W x 36 in. H
69 cm. L x 46 cm. W x 92 cm. H

Weight: 31 lbs. / 14 kgs.

2 x 3 in. (7.5 cm.) coaxial mid-high speakers @ 3W 4 Ohms
1 x 4 in. (10 cm.) subwoofer speaker @ 15W 4 Ohms

Power rating: 12 Volts at 1830mA

DASHBOARD CONTROL PANEL



ASSEMBLY INSTRUCTIONS

Step 1: Lift seatback to the upright position.

Step 2: Secure the seat back using the locking hinge and attach hook & loop fasteners.

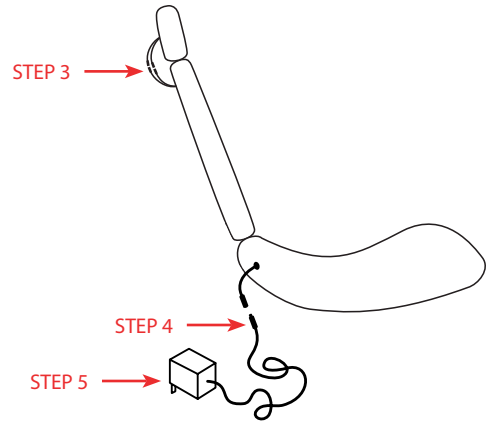
Step 3: Insert headrest and connect audio cords from backrest and headrest.

Step 4: Insert power receptacle (4) into adapter (2).

Step 5: Plug adapter (2) into outlet.

Step 6: Turn Boomchair™ on by turning Power knob (C) clockwise.

Step 7: Connect the audio device or game console using one of the methods described on page 4 and 5.



CONNECTING TO GAME CONSOLES

Note: Most game consoles are supplied with a custom connector with yellow video out and RCA red/white audio out.

DIRECT CONNECTION

Step 1: Plug yellow composite video cable from game console into video input of TV. (Fig. 1)

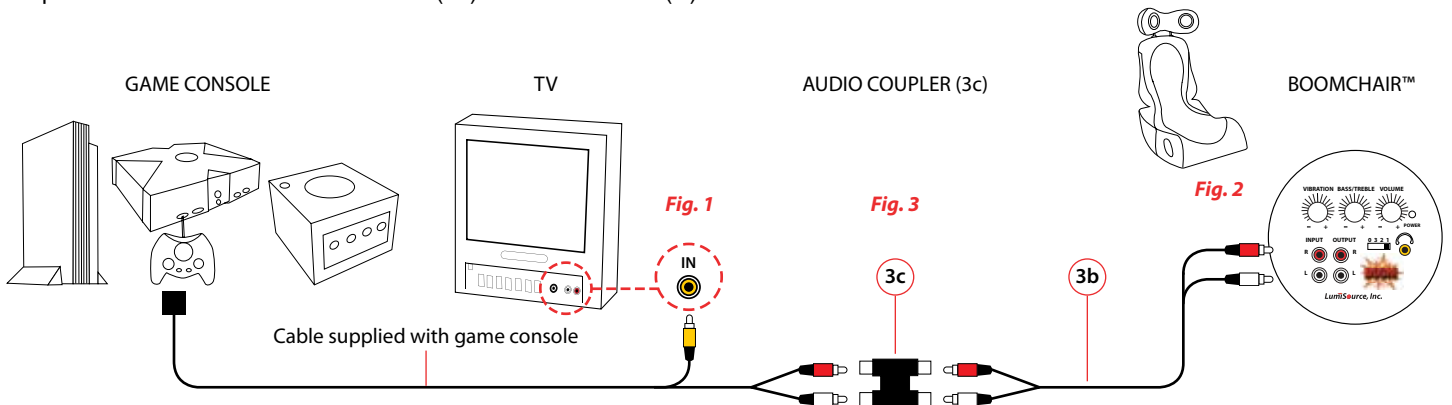
Step 2: Plug Red/White RCA cord from game console into RCA INPUT (H) of BoomChair™. (Fig. 2)

Note: It may be necessary to extend your BoomChair™ further away from your TV or console. Here's how. (Fig.3)

Step 1: Connect Audio Coupler (3c) to Red/White RCA cord from game console.

Step 2: Connect one end of RCA cord (3b) into other end of Audio Coupler (3c).

Step 3: Connect other end of RCA cord (3b) into RCA INPUT (H) of BoomChair™.



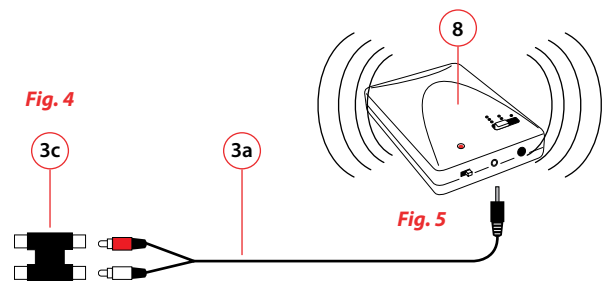
WIRELESS CONNECTION

Step 1: Connect Audio Coupler (3c) to Red/White RCA cord from game console.

Step 2: Connect red/white end of RCA cord (3a) into other end of Audio Coupler (3c). (Fig. 4)

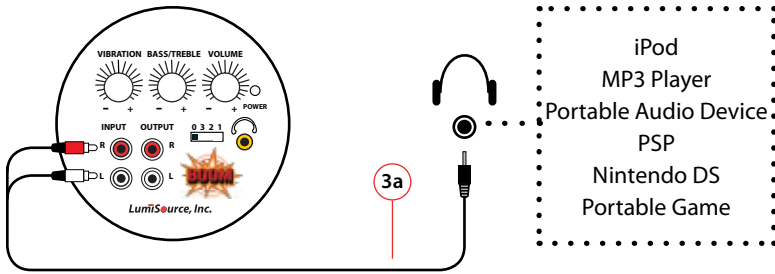
Step 3: Connect mini audio end of RCA cord (3a) into Wireless Transmitter (8). (Fig. 5)

Step 3: Set transmitter and channel switch (E) to matching frequency.



CONNECTING TO PORTABLE AUDIO / VIDEO DEVICES

DIRECT CONNECTION - BE SURE THE WIRELESS CHANNEL SELECTOR IS SWITCHED TO "0"



Step 1: Connect the Red/White ends of RCA cord (3a) into RCA INPUT (H) of BoomChair™.

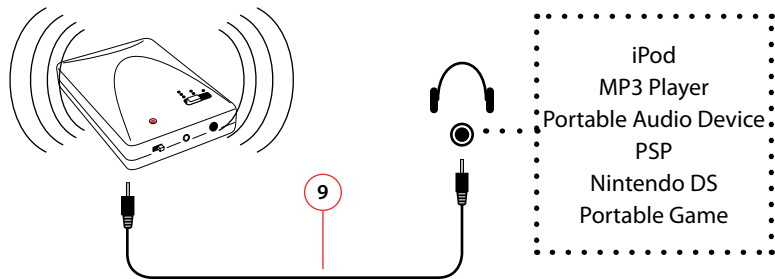
Step 2: Plug the single end of the RCA cord (3a) into the headphone jack of your device.

Step 3: Turn Boomchair™ on by turning Power knob (C) clockwise.

Step 4: Turn portable device on.

BE SURE THE WIRELESS CHANNEL SELECTOR NUMBER ON THE CHAIR MATCHES THE TRANSMITTER WITH CORRESPONDING NUMBER OF DOTS

WIRELESS CONNECTION



Step 1: Insert 4 AA batteries (not included) into wireless transmitter. Turn power switch on.

Step 2: Connect one end of the wireless audio cord (9) into the wireless transmitter.

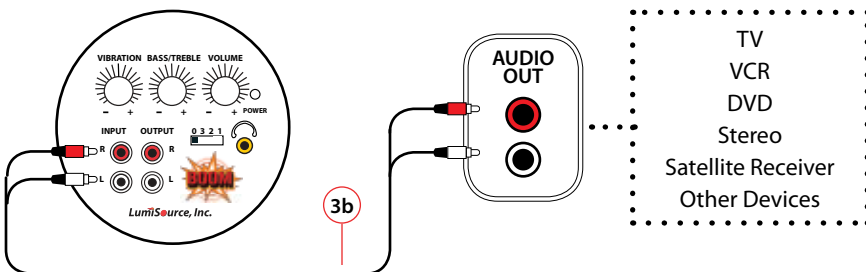
Step 3: Connect the other end of the wireless audio cord (9) into the headphone jack of your device.

Step 4: Turn Boomchair™ on by turning Power knob (C) clockwise.

Step 5: Set transmitter and Boomchair™ channel switch (E) to matching frequency.

CONNECTING TO AUDIO / VIDEO DEVICES

DIRECT CONNECTION - BE SURE THE WIRELESS CHANNEL SELECTOR IS SWITCHED TO "0"



Step 1: Connect the Red/White ends of RCA cord (3b) into RCA INPUT (H) of BoomChair™.

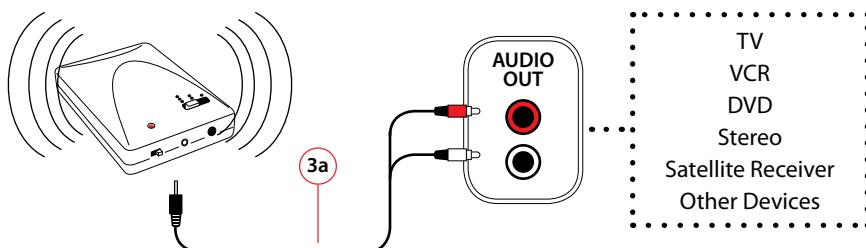
Step 2: Connect the other ends of RCA cord (3b) into AUDIO OUTPUT of Audio/Video device.

Step 3: Turn Boomchair™ on by turning Power knob (C) clockwise.

Step 4: Turn Audio/Video device on.

BE SURE THE WIRELESS CHANNEL SELECTOR NUMBER ON THE CHAIR MATCHES THE TRANSMITTER WITH CORRESPONDING NUMBER OF DOTS

WIRELESS CONNECTION



Step 1: Insert 4 AA batteries (not included) into wireless transmitter. Turn power switch on.

Step 2: Connect single end of RCA cord (3a) into the wireless transmitter.

Step 3: Connect other end of RCA cord (3a) into AUDIO OUTPUT of Audio/Video device.

Step 4: Turn Boomchair™ on by turning Power knob (C) clockwise.

Step 5: Set transmitter and Boomchair™ channel switch (E) to matching frequency.

DAISY CHAINING CHAIRS TOGETHER

DIRECT CONNECTION

Step 1: Connect BoomChair™ to any media device as described on pages 4 or 5. This is the first chair.

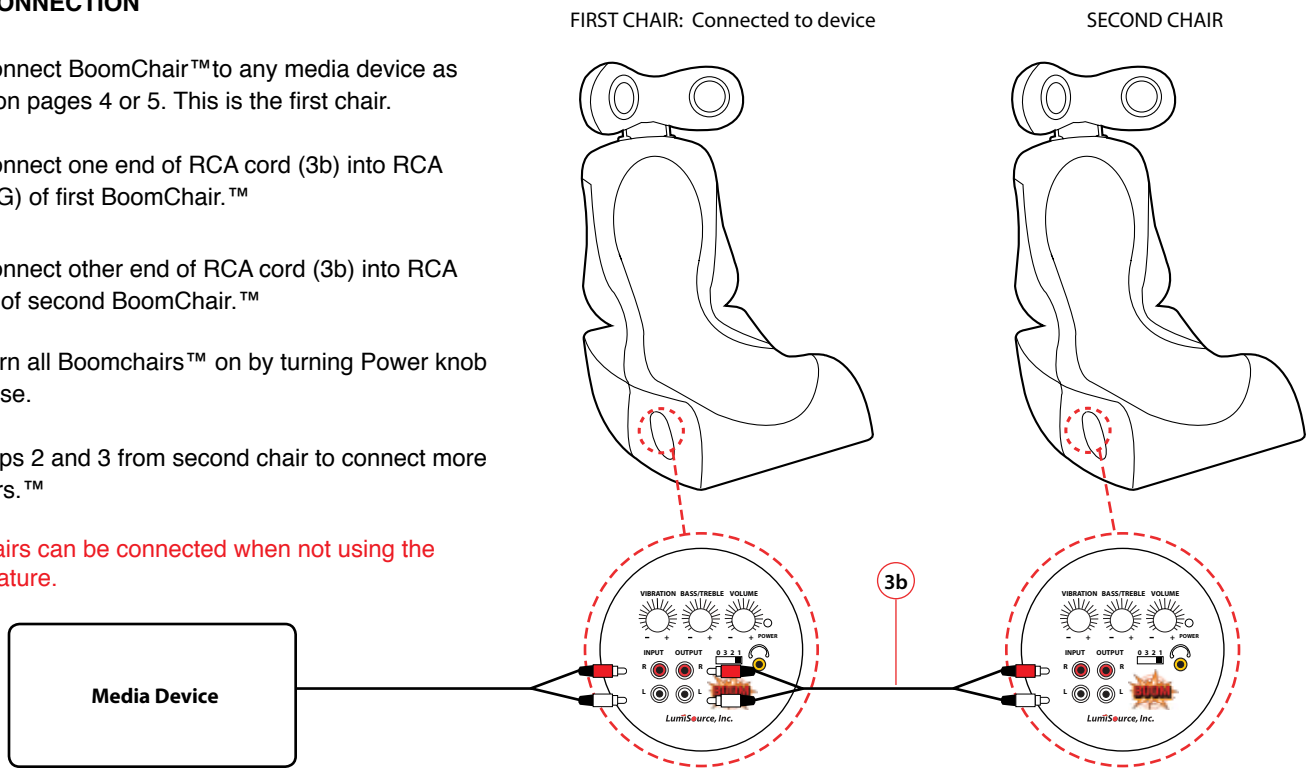
Step 2: Connect one end of RCA cord (3b) into RCA OUTPUT (G) of first BoomChair.™

Step 3: Connect other end of RCA cord (3b) into RCA INPUT (H) of second BoomChair.™

Step 4: Turn all Boomchairs™ on by turning Power knob (C) clockwise.

Repeat steps 2 and 3 from second chair to connect more BoomChairs.™

Up to 4 chairs can be connected when not using the wireless feature.



WIRELESS CONNECTION

Up to 8 chairs can be connected using the wireless method. This requires only one transmitter and all chairs switched to wireless mode.

Step 1: Connect Boomchair to any device using the wireless methods described on pages 4 or 5.

Step 2: Set transmitter and all Boomchair™ channel switches (E) to matching frequency.

Step 3: Turn all Boomchairs™ on by turning Power knob (C) clockwise.

WIRELESS CONNECTION TIPS

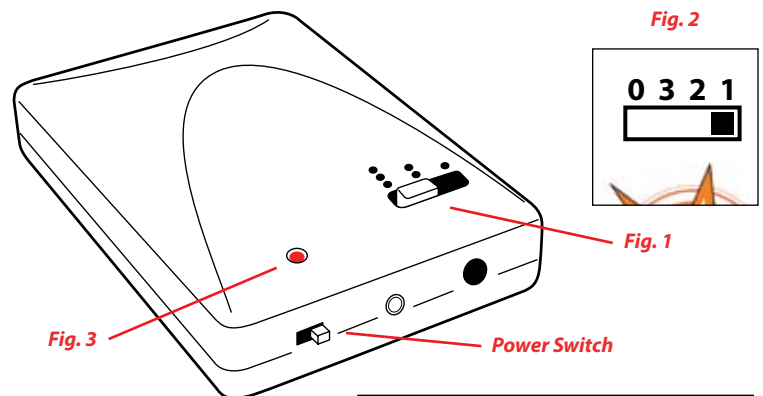
Should interference occur, switch the channel on the wireless transmitter using the top slider bar (Fig. 1).

Switch the channel selector on the Boomchair™ (Fig. 2) to the same channel as the transmitter. The number corresponds to the number of dots on the transmitter. Select "0" for non-wireless connections.

Make sure all cables are securely connected.

Make sure batteries are correctly installed in the transmitter, and that the power is on, as indicated by the red LED (Fig. 3).

If you experience static or poor reception from your wireless connection, you may need to select the direct connection method to ensure the best possible sound quality. See page 5.



WARNING:
DO NOT use the adapter for the chair with this transmitter. It will permanently damage the transmitter and void your warranty. Use only 9V - 12V DC, 100 mA - 500 mA adapter, or visit www.BoomChair.com to order the proper adapter.

TROUBLESHOOTING BOOMCHAIR™

For returns, exchanges, or troubleshooting questions please contact LumiSource directly at 1-888-461-5864 or write to customerservice@lumisource.com.

Q: Why isn't there sound coming from any of my speakers?

A: Ensure your BoomChair™ is connected as described in the Setup Guide. Check that the power to the unit is on and the volume is turned up. Also, make sure your audio device is not set to "MUTE" and volume is turned up. If using wireless connection, make sure the transmitter and BoomChair™ are set to the same frequency. Make sure wireless transmitter has fresh batteries and is turned on.

Q: Why don't I feel any vibration?

A: Make sure the vibration control is switched on. The vibration is sensitive to volume and bass because it interacts with the music/ game. Adjust the sensitivity of the vibration, volume, and bass according to your desired settings. Make sure the volume on the audio device is turned to max, or you will not feel the vibration.

Q: Where can I get more information?

A: Visit us at www.BoomChair.com or www.LumiSource.com

Contact information: LumiSource, Inc. 2950 Old Higgins Road, Elk Grove Village, IL 60007

E-mail: customerservice@lumisource.com

MAINTENANCE AND REPAIR

If a problem occurs while using this product, please contact us. **DO NOT** open unit or attempt to repair on your own. It may result in serious injury from electric shock and void your product warranty.

CLEANING/CARE INSTRUCTIONS

Fabric: Use a clean cloth to dab lightly with soap and water. **DO NOT** rub. **DO NOT** immerse in water. **DO NOT** use detergent.

LUMISOURCE, INC. LIMITED WARRANTY

LIMITED WARRANTY: LumiSource, Inc. ("LumiSource") warrants this product against defects in materials and workmanship for a period of ninety (90) days from the date of original consumer purchase. If a covered warranty claim is timely made, LumiSource® will, at its sole discretion: (a) repair the product, using new and/or refurbished replacement parts or (b) replace the product with an identical (or comparable) product, without charge to you other than the initial shipping cost to return the product. LumiSource® will only pay return shipping charges for destinations within the 48 contiguous U.S.A., if the returned product is covered by the limited warranty.

WHAT THIS WARRANTY DOES NOT COVER: This warranty does not cover defects resulting from accidents, alterations, unauthorized repair, failure to follow instructions, misuse, commercial use, fire, flood, or acts of God.

WHAT WE ASK YOU TO DO: If there is a covered defect, please write or email us within 90 days of the date of purchase at the address noted on page 8 to obtain instructions and authorization to return the product to LumiSource®. You will need to pack the product securely in packaging providing at least the degree of protection of the original carton and packing materials and ship it to us at your expense. You will also need to include with the product (a) a copy of your original proof of purchase (retail receipt) showing the date of purchase and (b) a detailed explanation of the problem(s) requiring service.

TO THE EXTENT PERMITTED BY LAW, THIS LIMITED WARRANTY AND THE REMEDIES SET FORTH ABOVE ARE EXCLUSIVE AND IN LIEU OF ALL OTHER WARRANTIES, REMEDIES AND CONDITIONS, ORAL OR WRITTEN, EXPRESS OR IMPLIED. TO THE EXTENT PERMITTED BY LAW, LUMISOURCE® HEREBY DISCLAIMS ANY IMPLIED WARRANTIES, INCLUDING WITHOUT LIMITATION, WARRANTIES OF MERCHANTABILITY AND FITNESS FOR A PARTICULAR PURPOSE. TO THE EXTENT APPLICABLE STATE LAW EXCLUDES SUCH DISCLAIMERS, THEN TO THE EXTENT ALLOWED BY LAW, THE TIME FOR ANY CLAIMS FOR SUCH IMPLIED WARRANTIES SHALL EXPIRE 90 DAYS FROM THE DATE OF ORIGINAL CONSUMER PURCHASE. TO THE EXTENT PERMITTED BY LAW, LUMISOURCE® IS NOT RESPONSIBLE FOR DIRECT, SPECIAL, INCIDENTAL OR CONSEQUENTIAL DAMAGES, INCLUDING BUT NOT LIMITED TO LOSS OF TIME, INCONVENIENCE, LOSS OF USE OF YOUR PRODUCT, OR PERSONAL INJURY OR PROPERTY DAMAGE, CAUSED BY YOUR PRODUCT OR ITS FAILURE TO WORK.

This limited warranty gives you specific legal rights. Some states do not allow the exclusion or limitation of incidental or consequential damages, and applicable law may not permit the exclusion of certain implied warranties. You may also have other rights, which vary, from state to state.

**For returns, exchanges, or troubleshooting questions
please contact LumiSource directly at 1-888-461-5864
or write to customerservice@lumisource.com.**

LumiSource, Inc.

2950 Old Higgins Road, Elk Grove Village, IL 60007

E-mail: customerservice@lumisource.com

Phone: 1-888-461-5864 (toll free)

Phone: 1-847-699-8988 (international)

www.BoomChair.com • www.LumiSource.com

© 2008 LumiSource, Inc. All rights reserved. Boomchair™ PULSE™, the Boomchair™ logo, and Boomchair™ Pulse™ logo are trademarks of LumiSource Inc. Other trademarks are properties of their respective owners. The design of this product is a trade dress of LumiSource, Inc. Patents pending. Actual contents may differ slightly from those pictured. Made in China. Distributed by LumiSource Inc., 2950 Old Higgins Road, Elk Grove Village, IL 60007. www.lumisource.com.

This product is not manufactured or distributed by Microsoft®, the owner of the trademark Xbox™; by Nintendo®, the owner of the trademark Wii™, GameCube™, and DS™; by Sony®, the owner of the trademarks Playstation™ PS3™, PS2™, and PSP™; or by Apple Computer, Inc., the owner of the trademark iPod™.